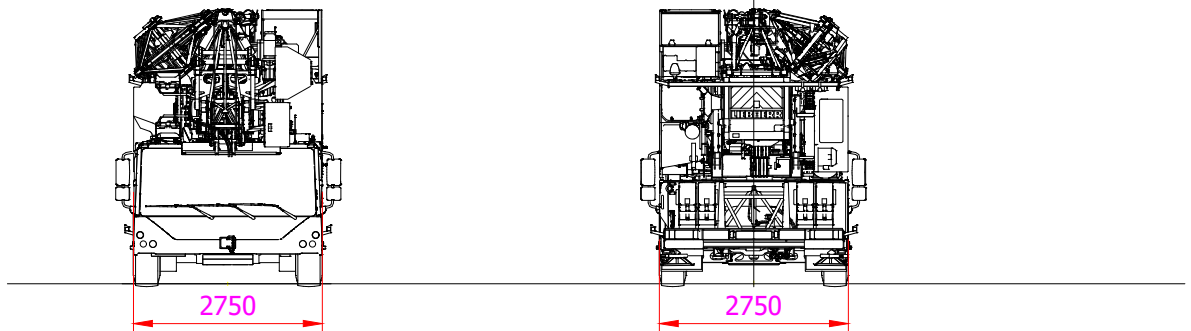
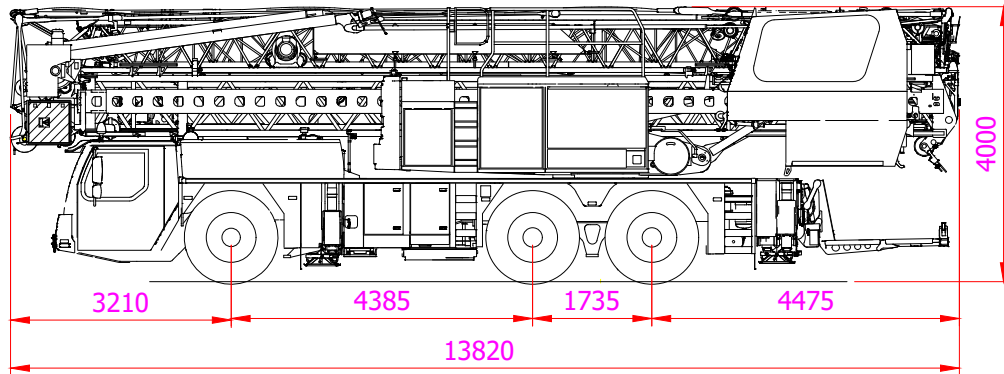


Merk:	LIEBHERR
Type:	MK73-3.1



### Voertuigeigenschappen

Totaal gewicht (kg)	Asconfiguratie	Hondegang mogelijk	Kraanvoeding	Doorrijhoogte
36000	6x4x6	Nee	1x32A CEE	400 cm



0900 - 660 60 60  
[www.saan.nl](http://www.saan.nl)  
[info@saan.nl](mailto:info@saan.nl)

Versiedatum: 18-5-2021

Servicecode:

KMTK38

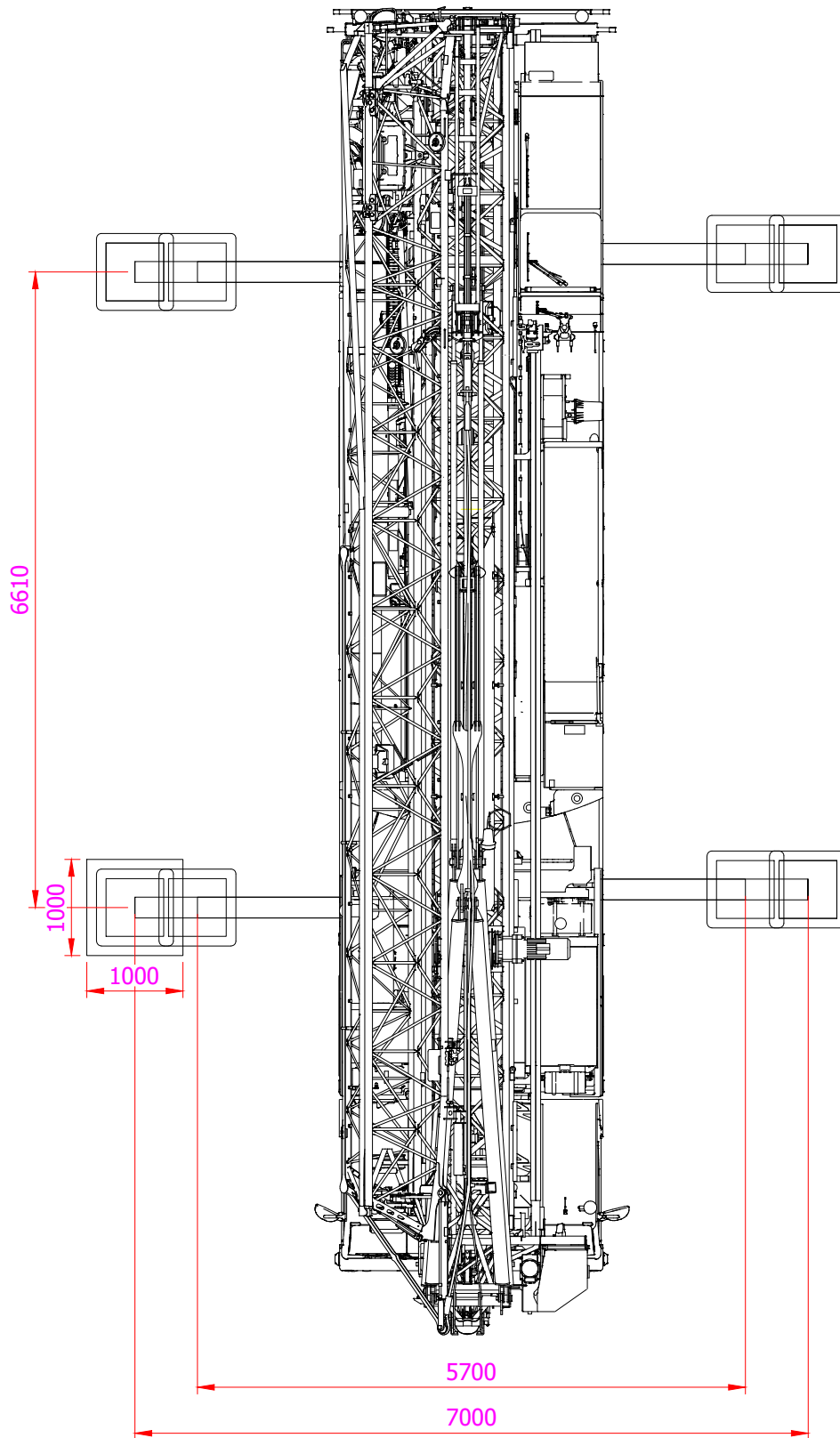
This publication remains the property of the publisher and shall be treated as confidential, unless contractually specified otherwise. No parts of it may be reproduced, stored in a retrieval system or transmitted in any form or by any means, without the prior written permissions of the publisher. Typing errors reserved. No rights may be derived from these drawings and tables.

Pagina:

1 / 5

Copyright Koninklijke Saan B.V. 2009

Merk:	LIEBHERR
Type:	MK73-3.1



KONINKLIJKE  
**SAAN**

0900 - 660 60 60  
www.saan.nl  
info@saan.nl

Versiedatum: 18-5-2021

Servicecode:

KMTK38

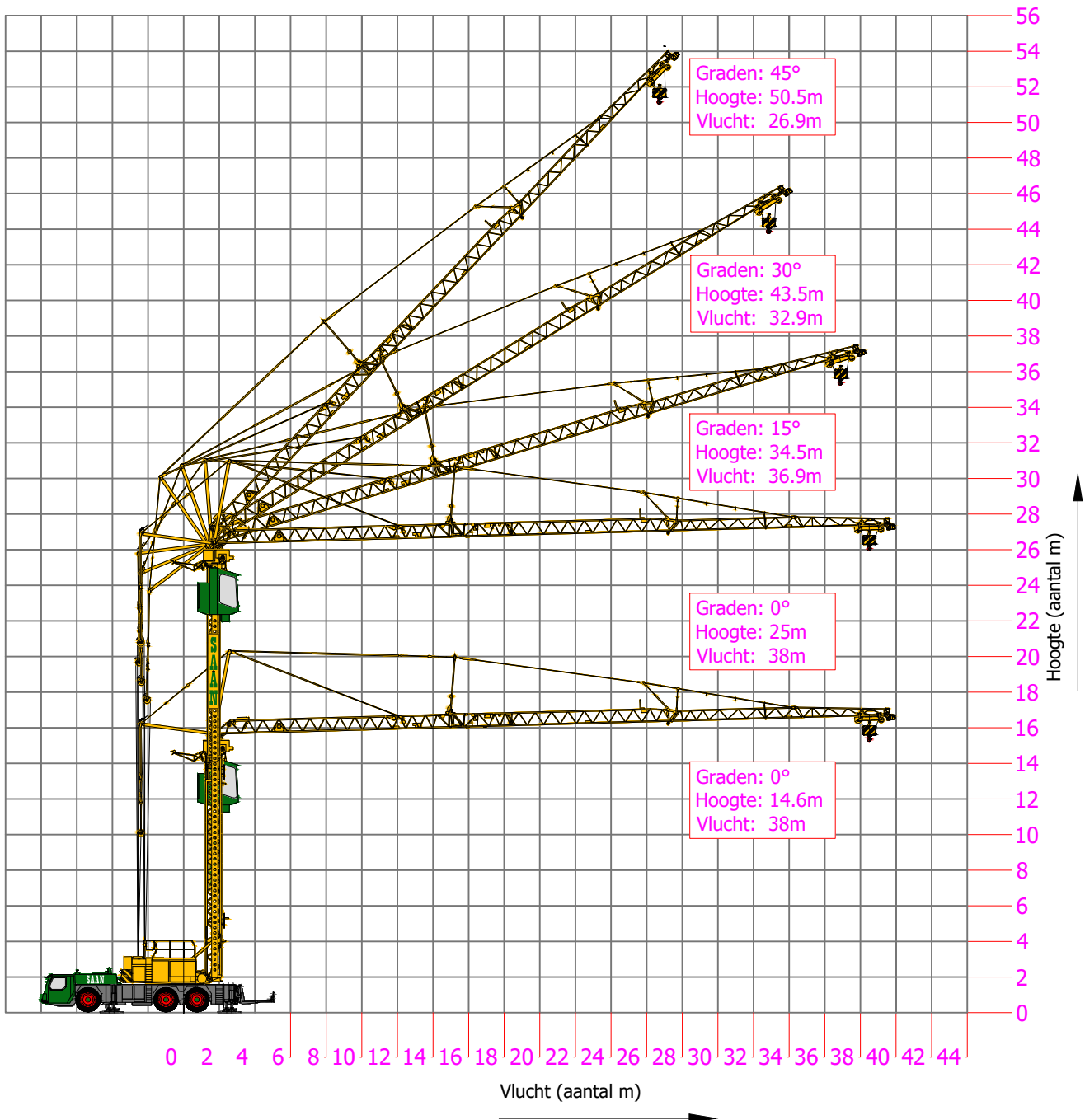
This publication remains the property of the publisher and shall be treated as confidential, unless contractually specified otherwise. No parts of it may be reproduced, stored in a retrieval system or transmitted in any form or by any means, without the prior written permissions of the publisher. Typing errors reserved. No rights may be derived from these drawings and tables.

Pagina:

2 / 5

Copyright Koninklijke Saan B.V. 2009

Merk:	LIEBHERR
Type:	MK73-3.1



KONINKLIJKE  
**SAAN**

0900 - 660 60 60  
www.saan.nl  
info@saan.nl

Versiedatum: 18-5-2021

Servicecode:

KMTK38

This publication remains the property of the publisher and shall be treated as confidential, unless contractually specified otherwise. No parts of it may be reproduced, stored in a retrieval system or transmitted in any form or by any means, without the prior written permissions of the publisher. Typing errors reserved. No rights may be derived from these drawings and tables.

Pagina:  
3 / 5

Copyright Koninklijke Saan B.V. 2009

Merk:	LIEBHERR
Type:	MK73-3.1

Stempelbasis: 7,00x 6,61			<b>6,1 ton ballast</b>														
Hoek	Modus	Bereik	12 m	14 m	16 m	18 m	20 m	22 m	24 m	26 m	28 m	30 m	32 m	34 m	36 m	38 m	38,5 m
0°	38,5	280°	6000	5310	4590	4040	3600	3240	2940	2680	2470	2280	2110	1970	1840	1730	1700
		80°	5690	4700	4000	3460	3050	2710	2440	2210	2020	1850	1710	1580	1470	1370	1350
	Plus	280°	6000	5770	4990	4380	3900	3510	3190	2910	2680	2470	2300	2140	2000	1880	1850
		80°	6000	5180	4380	3770	3310	2940	2640	2390	2180	2000	1840	1700	1580	1480	1450
15°	37,1	280°	1850											1760	1700		
		80°	1850											1770	1630	1510	1400
	Plus	280°	2600								2380	2200	2030	1890	1760	1700	
		80°	2600							2350	2120	1940	1770	1630	1510	1400	1350
30°	33,3	280°	5500	4710	4100	3630	3250	2930	2670	2440	2250	2080	1940	1850			
		80°	5120	4260	3640	3170	2790	2490	2250	2040	1860	1710	1580	1500			
45°	27,4	280°	1850														
		80°	1850														
	Plus	280°	2800					2470	2210	1980	1850						
		80°	2800					2470	2210	1980	1850						

→ kg

Stempelbasis: 5,75x 6,61			<b>6,1 ton ballast</b>														
Hoek	Modus	Bereik	12 m	14 m	16 m	18 m	20 m	22 m	24 m	26 m	28 m	30 m	32 m	34 m	36 m	38 m	38,5 m
0°	38,5	360°	4650	3920	3380	2960	2630	2360	2130	1940	1780	1640	1510	1400	1310	1220	1200
	Plus	360°	5400	4480	3820	3320	2920	2610	2350	2130	1940	1780	1650	1520	1420	1320	1300
15°	37,1	360°	1850								1800	1640	1510	1390	1290	1200	1150
	Plus	360°	2600					2460	2200	1980	1800	1640	1510	1390	1290	1200	1150
30°	33,3	360°	4110	3460	2980	2610	2310	2070	1870	1700	1550	1420	1310	1250			
15°	27,4	360°	1850								1760	1650					
	Plus	360°	2800				2710	2400	2150	1940	1760	1650					

→ kg



KONINKLIJKE  
**SAAN**

0900 - 660 60 60  
www.saan.nl  
info@saan.nl

Versiedatum: 18-5-2021

Servicecode:

KMTK38

This publication remains the property of the publisher and shall be treated as confidential, unless contractually specified otherwise. No parts of it may be reproduced, stored in a retrieval system or transmitted in any form or by any means, without the prior written permissions of the publisher. Typing errors reserved. No rights may be derived from these drawings and tables.

Pagina:

4 / 5

Copyright Koninklijke Saan B.V. 2009

Merk:	LIEBHERR
Type:	MK73-3.1

Stempelbasis: 7,00x 6,61			<b>7,2 ton ballast</b> 1,1 ton aanvoeren															
Hoek	Modus	Bereik	12 m	14 m	16 m	18 m	20 m	22 m	24 m	26 m	28 m	30 m	32 m	34 m	36 m	38 m	38,5 m	
0°	38,5	280°	6000	5370	4710	4180	3750	3400	3100	2850	2630	2440	2280	2130	2000	1880	1850	
		80°	6000	5040	4330	3790	3360	3010	2720	2480	2270	2100	1940	1800	1680	1580	1550	
	Plus	280°	6000	5790	5070	4500	4040	3660	3350	3070	2840	2640	2460	2300	2160	2030	2000	
		80°	6000	5500	4700	4090	3610	3230	2920	2650	2430	2240	2070	1920	1790	1680	1650	
15°	37,1	280°	1850															
		80°	1850												1720	1610	1550	
	Plus	280°	2600								2430	2280	2140	2020	1910	1850		
		80°	2600						2590	2360	2170	2000	1850	1720	1610	1550		
30°	33,3	280°	5500	4710	4100	3630	3250	2930	2670	2440	2250	2080	1940	1850				
		80°	5470	4630	4010	3520	3140	2820	2560	2330	2140	1980	1830	1750				
45°	27,4	280°	1850															
		80°	1850															
	Plus	280°	2800					2470	2210	1980	1850							
		80°	2800					2470	2210	1980	1850							

→ kg

Stempelbasis: 5,75x 6,61			<b>7,2 ton ballast</b> 1,1 ton aanvoeren														
Hoek	Modus	Bereik	12 m	14 m	16 m	18 m	20 m	22 m	24 m	26 m	28 m	30 m	32 m	34 m	36 m	38 m	38,5 m
0°	38,5	360°	5180	4370	3770	3300	2930	2630	2380	2170	1990	1830	1690	1570	1470	1370	1350
	Plus	360°	6000	4970	4230	3670	3240	2890	2600	2360	2160	1980	1830	1700	1580	1470	1450
15°	37,1	360°	1850										1710	1570	1460	1350	1300
	Plus	360°	2600					2500	2250	2040	1860	1710	1570	1460	1350	1300	
30°	33,3	360°	4660	3930	3390	2980	2640	2370	2140	1950	1790	1650	1520	1450			
15°	27,4	360°	1850														
	Plus	360°	2800				2720	2420	2180	1970	1850						

→ kg



**KONINKLIJKE**  
**SAAN**

0900 - 660 60 60  
www.saan.nl  
info@saan.nl

Versiedatum: 18-5-2021

Servicecode:

KMTK38

This publication remains the property of the publisher and shall be treated as confidential, unless contractually specified otherwise. No parts of it may be reproduced, stored in a retrieval system or transmitted in any form or by any means, without the prior written permissions of the publisher. Typing errors reserved. No rights may be derived from these drawings and tables.

Pagina:

5 / 5

Copyright Koninklijke Saan B.V. 2009