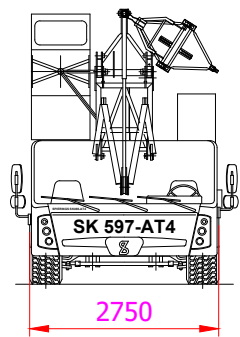
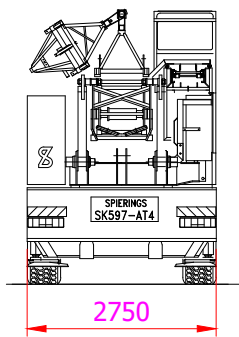
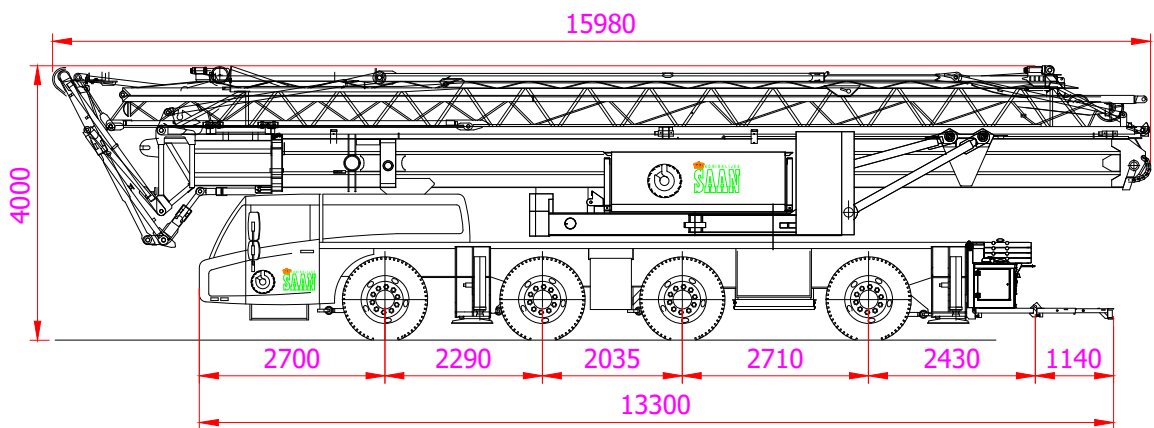




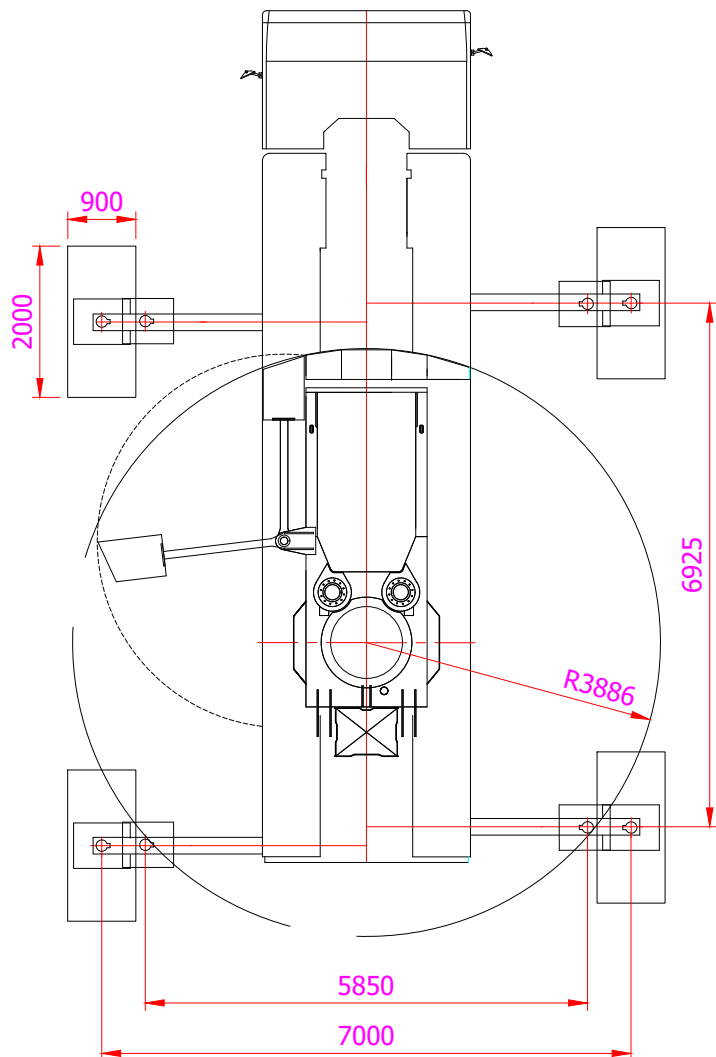
Merk:	Spierings
Type:	SK597-AT4



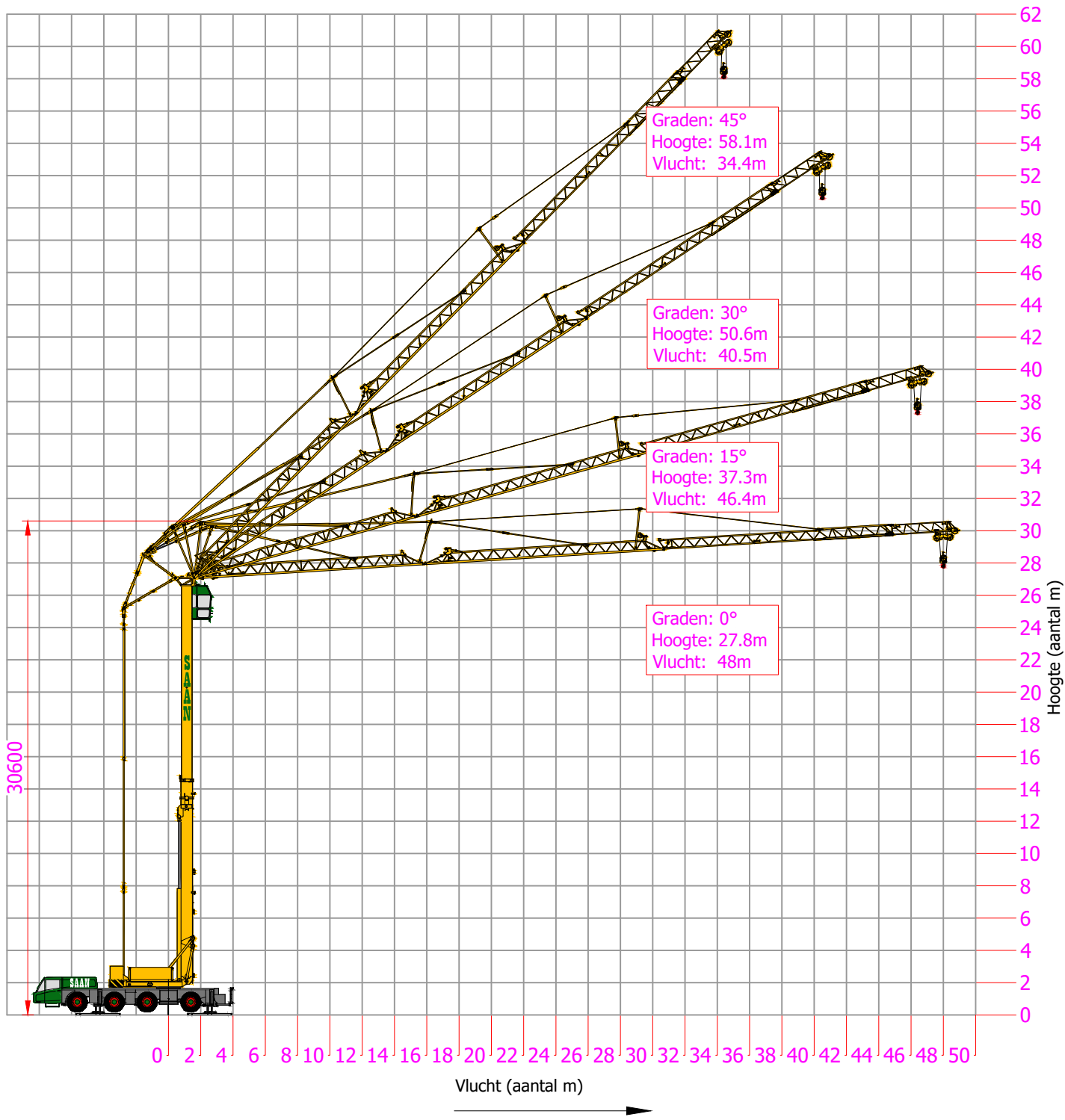
Voertuigeigenschappen				
Totaal gewicht (kg)	Asconfiguratie	Hondegang mogelijk	Kraanvoeding	Doorrijhoogte
48000	8x6x6	Ja	-	400 cm

 	0900 - 660 60 60 <a href="http://www.saan.nl">www.saan.nl</a> <a href="mailto:info@saan.nl">info@saan.nl</a>	Versiedatum: <b>11-1-2022</b>	Servicecode: <b>KMTK48</b>
		<small>This publication remains the property of the publisher and shall be treated as confidential, unless contractually specified otherwise. No parts of it may be reproduced, stored in a retrieval system or transmitted in any form or by any means, without the prior written permissions of the publisher. Typing errors reserved. No rights may be derived from these drawings and tables.</small>	

Merk:	Spierings
Type:	SK597-AT4

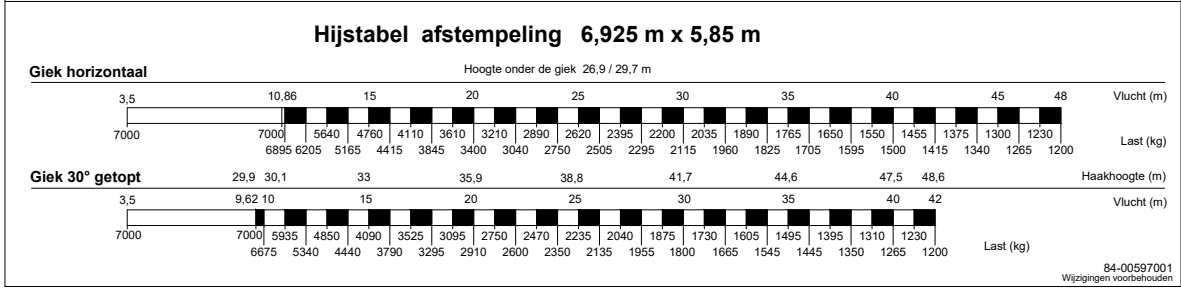
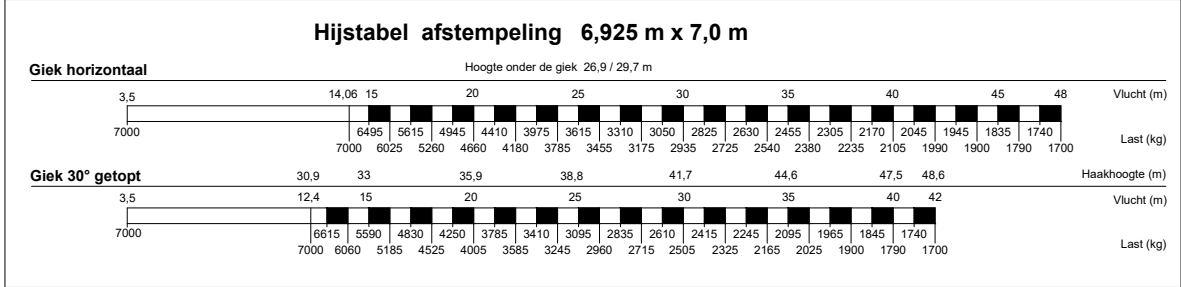




Merk:	Spierings
Type:	SK597-AT4



Merk:	Spierings
Type:	SK597-AT4

 <b>SPIERINGS</b> MOBILE CRANES Merwedestraat 15, Oss Nederland	Merk: <b>SPIERINGS</b>	Type: <b>SK597-AT4</b>	
	Werken toegestaan tot windkracht 7 (14 m/sec). De kraan geheel strijken bij windkracht 9 (21 m/sec) en wanneer de kraan voor een langere periode onbeheerd wordt achtergelaten. Ballastgewicht kraan: 8855 kg. Maximale stempelkracht: 360 kN.	Serienummer:	



 <b>SPIERINGS</b> MOBILE CRANES Merwedestraat 15, Oss Nederland	Merk: <b>SPIERINGS</b>	Type: <b>SK597-AT4</b>	
	Werken toegestaan tot windkracht 7 (14 m/sec). De kraan geheel strijken bij windkracht 9 (21 m/sec) en wanneer de kraan voor een langere periode onbeheerd wordt achtergelaten. Ballastgewicht kraan: 8855 kg. Maximale stempelkracht: 360 kN.	Serienummer:	

