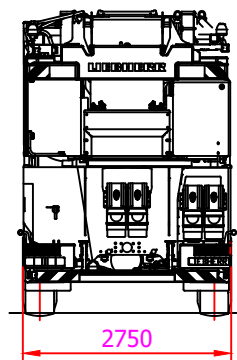
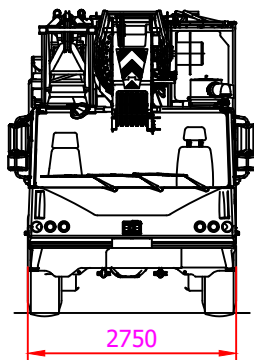
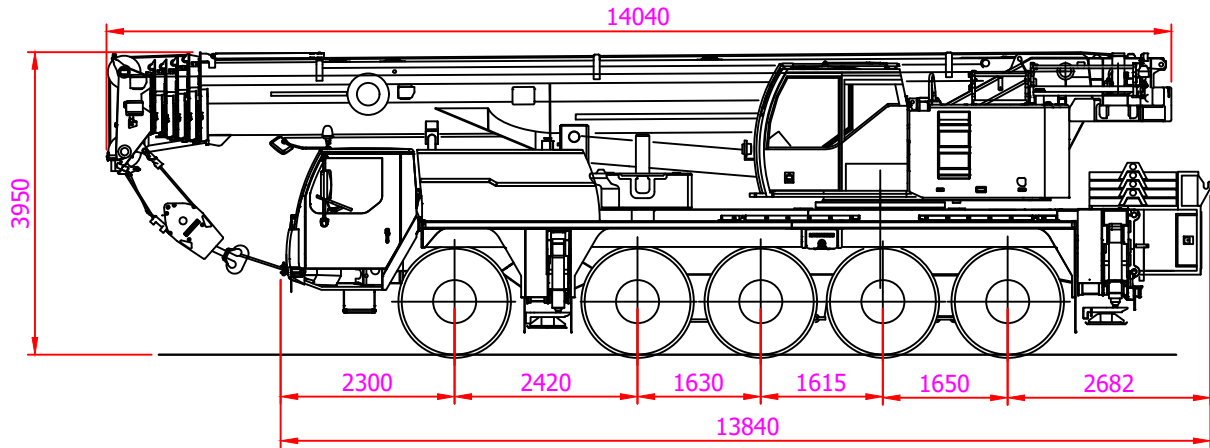


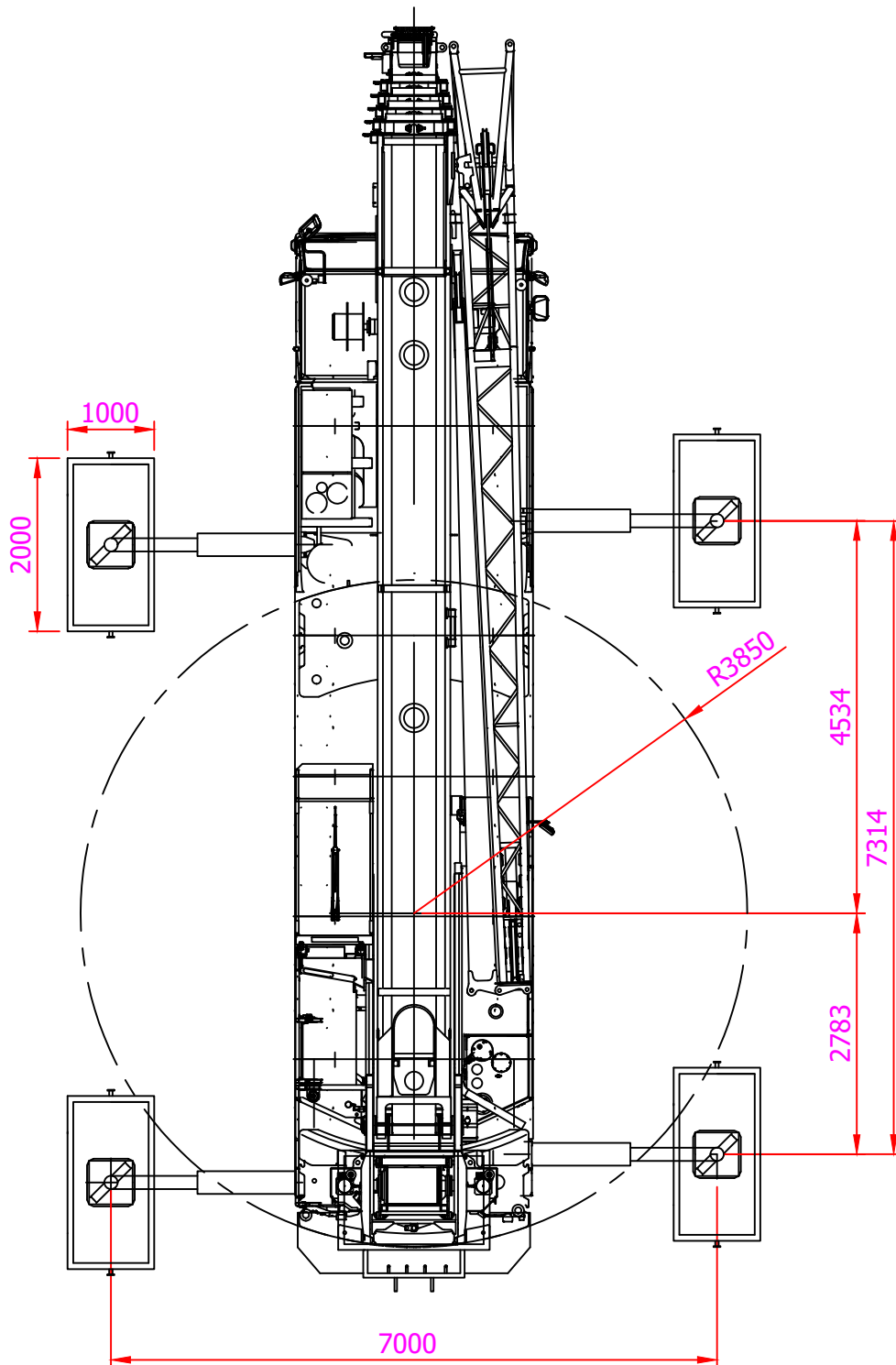
Merk:	Liebherr
Type:	LTM 1095-5.1



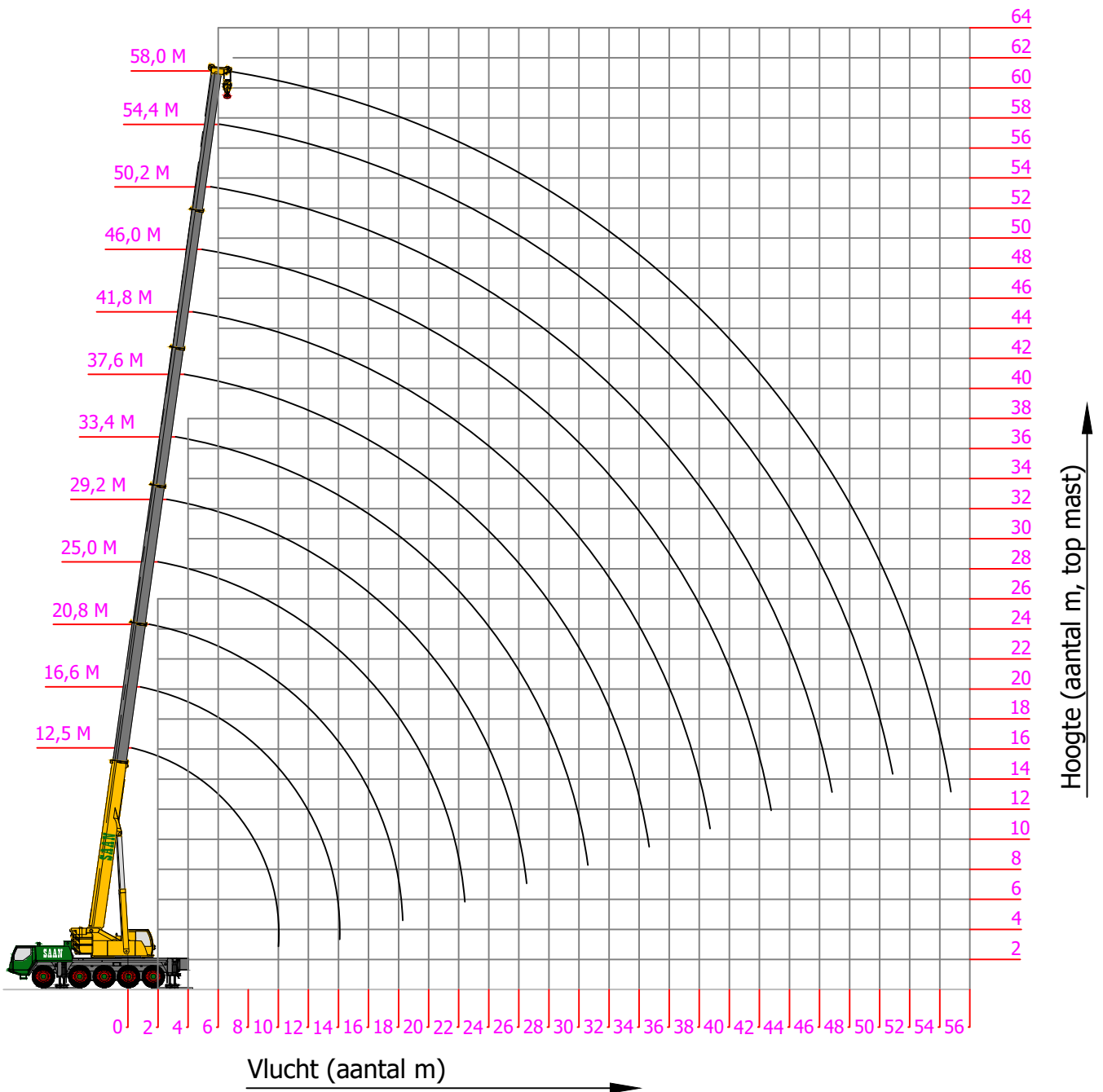
Voertuigeigenschappen			
Totaal gewicht (kg)	Asconfiguratie	Hondengang mogelijk	Doorrijhoogte (cm)
60000	5x4x5	Ja	395.0

Hijsblokken		
Capaciteit (t)	Gewicht (kg)	Omschrijving
5.7	140	Hijsbal
16.0	300	1-schijf
38.3	450	3-schijf

Merk:	Liebherr
Type:	LTM 1095-5.1



Merk:	Liebherr
Type:	LTM 1095-5.1



KONINKLIJKE
SAAN

0900 - 660 60 60
www.saan.nl
info@saan.nl

Versiedatum: 24-12-2021

Servicecode:

K100AK

This publication remains the property of the publisher and shall be treated as confidential, unless contractually specified otherwise. No parts of it may be reproduced, stored in a retrieval system or transmitted in any form or by any means, without the prior written permissions of the publisher. Typing errors reserved. No rights may be derived from these drawings and tables.
Copyright Koninklijke Saan B.V. 2009

Pagina:

3 / 8

Merk:	Liebherr
Type:	LTM 1095-5.1

Vlucht (M)	Hoofdmast 12.5 - 58 m Contragewicht 23 ton												Vlucht (M)	
	12.5		16.6 m	20.8 m	25 m	29.2 m	33.4m	37.6 m	41.8 m	46 m	50.2 m	54.4 m		58 m
3	95	75	63											3
3.5	73	69	63	58										3.5
4	69	64	63	58	48.5									4
4.5	66	59	59	55	48	38								4.5
5	61	54	54	53	47	37.5	30							5
6	49.5	46	46.5	46.5	45	36	29.3	22.4						6
7	41	39.5	40.5	40	40	35	28.4	22	18.2					7
8	35	34	34.5	34.5	34	33.5	27.3	20.9	17.5	13.7				8
9	30	29.4	30	29.7	30.5	29.9	25.8	19.7	16.6	13.4	10.3			9
10	26.4	25.8	26.5	26.1	26.7	26.3	24.3	18.5	15.6	12.9	10.1	8		10
11			23.5	23.7	23.6	23.3	22.9	17.3	14.7	12.4	9.8	8	6.2	11
12			21	21.2	21.1	20.8	20.8	16.2	13.9	11.9	9.5	7.9	6.2	12
14			17.1	17.3	17.2	17.7	17.2	14.3	12.4	10.7	8.9	7.5	5.8	14
16				14.7	14.9	14.7	14.4	12.6	11.1	9.7	8.2	7	5.5	16
18				12.4	12.4	12.3	12	11.2	10	8.7	7.6	6.5	5.3	18
20					10.6	10.5	10.1	10.1	9	8	7	6.1	5	20
22					9.1	9	8.7	9	8.2	7.3	6.5	5.6	4.7	22
24						7.8	8.1	7.8	7.1	6.6	6	5.3	4.4	24
26						6.8	7.2	6.8	6.5	6.1	5.5	4.9	4.2	26
28							6.3	6	5.8	5.4	5	4.6	3.9	28
30							5.6	5.3	5.5	4.7	4.6	4.3	3.7	30
32								4.7	4.8	4.4	4.2	4	3.4	32
34								4.3	4.3	4	3.7	3.7	3.2	34
36									3.8	3.7	3.4	3.4	3	36
38									3.4	3.4	3.2	3	2.9	38
40										3.4	3	2.7	2.7	40
42										2.7	2.6	2.3	2.3	42
44											2.3	2	2	44
46											2	1.7	1.7	46
48												1.5	1.5	48
50												1.2	1.2	50
52													1	52
54													0.9	54

* Alleen over de achterzijde van de kraan



KONINKLIJKE
SAAN

0900 - 660 60 60
www.saan.nl
info@saan.nl

Versiedatum: 24-12-2021

Servicecode:

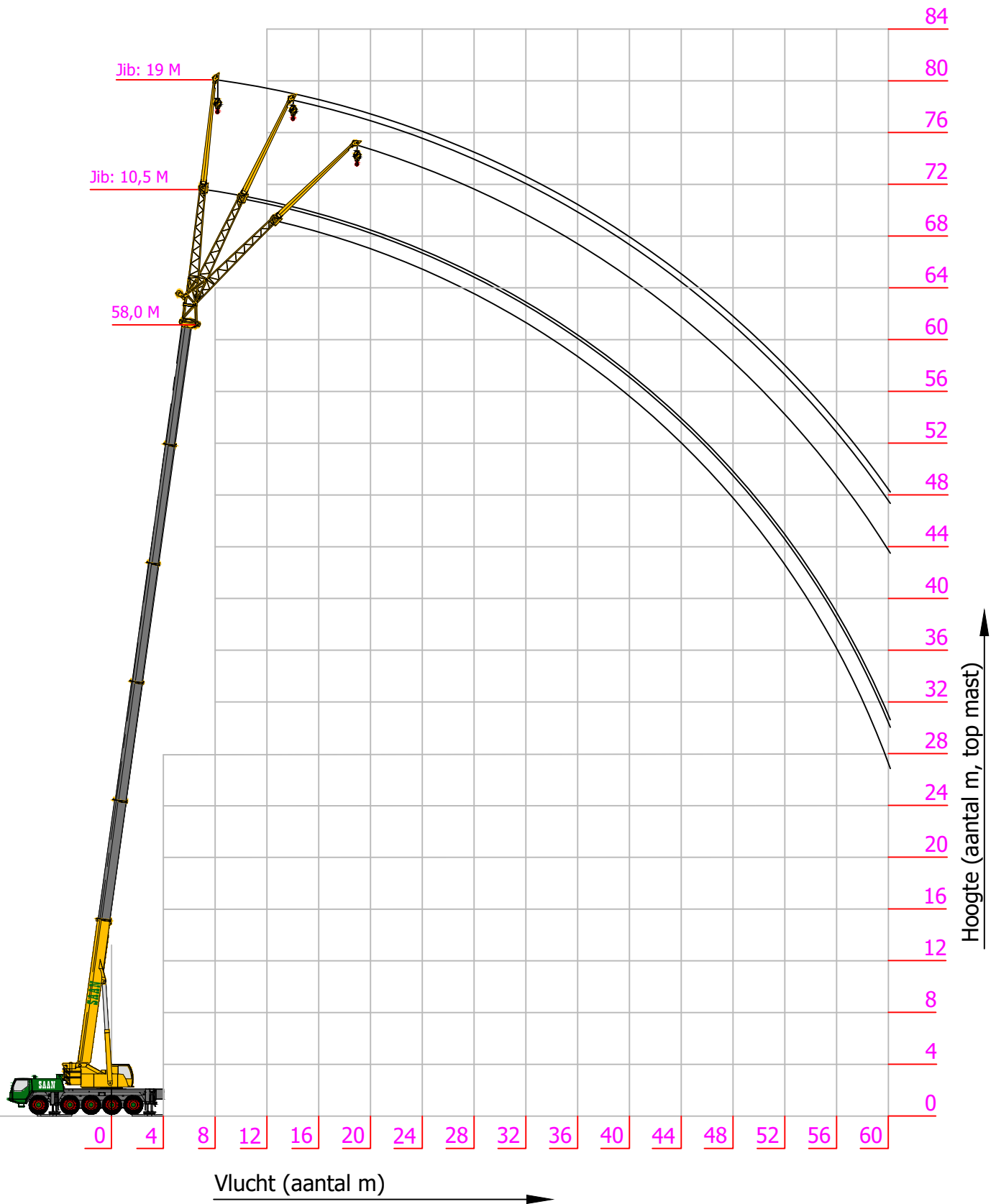
K100AK

This publication remains the property of the publisher and shall be treated as confidential, unless contractually specified otherwise. No parts of it may be reproduced, stored in a retrieval system or transmitted in any form or by any means, without the prior written permissions of the publisher. Typing errors reserved. No rights may be derived from these drawings and tables.
Copyright Koninklijke Saan B.V. 2009

Pagina:

4 / 8

Merk:	Liebherr
Type:	LTM 1095-5.1



Merk:	Liebherr
Type:	LTM 1095-5.1

(M)	Hoofdmast 12.5 - 58 m + 10.5 m Jib																					(M)				
	Contragewicht 23 ton																									
	12.5 m *			37.6 m			41.8 m			46 m			50.2 m			54.4 m			58 m							
	10.5 m			10.5 m			10.5 m			10.5 m			10.5 m			10.5 m			10.5 m							
	0°	20°	40°	0°	20°	40°	0°	20°	40°	0°	20°	40°	0°	20°	40°	0°	20°	40°	0°	20°	40°	0°	20°	40°		
4	11.4																								4	
5	11.2	9.1																								5
6	10.6	8.8																								6
7	9.9	8.3	6.8	10																						7
8	9.2	7.9	6.7	10			8.5																			8
9	8.5	7.5	6.4	10			8.5			7																9
10	7.8	7.2	6.3	10			8.5			7			5.1													10
11	7.3	6.8	6.1	9.8	8.2		8.5			7			5.1			4										11
12	6.8	6.3	5.9	9.6	8.1		8.4	7.5		7			5.1			4				3.2						12
14	5.9	5.6	5.5	9.2	7.7	6.3	8.3	7.3	6.1	7	6.7		5.1	5.1		4				3.2						14
16	5.3	5.1	5	8.8	7.4	6.1	8	7	6	6.7	6.4	5.7	5	4.9		3.9	3.9			3.2	3.2					16
18	4.7	4.6	4.8	8.4	7	6	7.6	6.8	5.9	6.3	6	5.6	4.9	4.6	4.5	3.8	3.7	3.6		3.2	3.2					18
20	4.2	4.3		7.9	6.7	5.9	7	6.6	5.8	5.8	5.6	5.4	4.6	4.4	4.2	3.6	3.6	3.5		3.2	3.1	3.1				20
22				7.5	6.4	5.7	6.4	6.2	5.7	5.4	5.2	5.1	4.3	4.1	4	3.5	3.4	3.4		3.1	3	3				22
24				7	6.1	5.6	5.8	5.8	5.5	5	4.9	4.8	4	3.9	3.8	3.3	3.2	3.2		3	2.9	2.9				24
26				6.2	5.7	5.3	5.4	5.3	5.2	4.7	4.5	4.5	3.8	3.6	3.6	3.2	3.1	3.1		2.9	2.8	2.8				26
28				5.5	5.5	5.1	4.9	4.9	4.9	4.3	4.2	4.2	3.5	3.4	3.4	3	2.9	2.9		2.7	2.7	2.7				28
30				4.9	5	5	4.5	4.5	4.6	3.9	3.9	3.9	3.3	3.3	3.3	2.9	2.8	2.8		2.6	2.5	2.5				30
32				4.3	4.5	4.6	3.9	4.2	4.2	3.6	3.6	3.6	3.1	3.1	3.1	2.7	2.7	2.7		2.4	2.4	2.4				32
34				3.8	4	4.1	3.4	3.7	3.8	3.3	3.3	3.4	2.9	2.9	2.9	2.6	2.5	2.5		2.3	2.3	2.3				34
36				3.3	3.5	3.6	3.1	3.2	3.3	2.9	3.1	3.2	2.7	2.8	2.8	2.4	2.4	2.4		2.2	2.2	2.2				36
38				2.9	3	3.1	2.8	2.9	2.9	2.5	2.7	2.9	2.6	2.6	2.6	2.3	2.3	2.3		2.1	2.1	2.1				38
40				2.5	2.6	2.7	2.5	2.6	2.7	2.4	2.4	2.5	2.3	2.4	2.5	2.2	2.2	2.2		2	2	2				40
42				2.2	2.3		2.1	2.3	2.3	2.2	2.3	2.3	2	2.1	2.2	2.1	2.1	2.1		1.8	1.9	1.9				42
44				1.9	1.9		1.8	1.9	2	1.9	2	2.1	1.9	1.9	1.9	1.8	2	2		1.7	1.8	1.8				44
46							1.5	1.6		1.6	1.7	1.8	1.8	1.8	1.8	1.5	1.7	1.8		1.4	1.6	1.7				46
48							1.3	1.4		1.5	1.6	1.6	1.5	1.7	1.7	1.2	1.4	1.5		1.2	1.3	1.4				48
50										1.4	1.5		1.3	1.4	1.4	1	1.1	1.2		1	1.1	1.2				50
52										1.3	1.3		1.1	1.2			0.9	1			0.9	1				52
54													0.9	1												54
56													0.7	0.8												56



0900 - 660 60 60
 www.saan.nl
 info@saan.nl

Versiedatum: 24-12-2021

Servicecode:

K100AK

This publication remains the property of the publisher and shall be treated as confidential, unless contractually specified otherwise. No parts of it may be reproduced, stored in a retrieval system or transmitted in any form or by any means, without the prior written permissions of the publisher. Typing errors reserved. No rights may be derived from these drawings and tables.

Pagina:

6 / 8

Copyright Koninklijke Saan B.V. 2009

Merk:	Liebherr
Type:	LTM 1095-5.1

Vlucht	Hoofdmast 13.7 - 58 m + 19 m Jib																					Vlucht	
	Contragewicht 23 ton																						
	12.5 m *			37.6 m			41.8 m			46 m			50.2 m			54.4 m			58 m				
(M)	0°	20°	40°	0°	20°	40°	0°	20°	40°	0°	20°	40°	0°	20°	40°	0°	20°	40°	0°	20°	40°	(M)	
4	3.7																						4
5	3.7																						5
6	3.7																						6
7	3.7																						7
8	3.6																						8
9	3.5	3		3.2																			9
10	3.4	3		3.2			3																10
11	3.3	3		3.2			3			3													11
12	3.1	2.9		3.2			3			3			2.8										12
14	2.8	2.8	2.4	3.2			3			3			2.8			2.3							14
16	2.5	2.6	2.4	3.2	2.8		3			3			2.8			2.3			1.9				16
18	2.2	2.4	2.3	3.1	2.8		3	2.7		3	2.7		2.8			2.3			1.9				18
20	2	2.1	2.2	3	2.7		3	2.7		3	2.7		2.8	2.6		2.3			1.9				20
22	1.8	1.9	2	2.9	2.6	2.3	2.9	2.6	2.3	3	2.6		2.8	2.6		2.3	2.3		1.9	1.9			22
24	1.6	1.7	1.8	2.7	2.5	2.3	2.7	2.5	2.3	2.9	2.6	2.3	2.7	2.5	2.2	2.3	2.3		1.9	1.9			24
26	1.5	1.5	1.6	2.6	2.4	2.3	2.6	2.5	2.2	2.8	2.5	2.2	2.7	2.5	2.2	2.3	2.3	2.1	1.8	1.9			26
28	1.4	1.4		2.4	2.3	2.2	2.5	2.4	2.2	2.8	2.5	2.2	2.7	2.4	2.2	2.3	2.2	2.1	1.8	1.9	1.9		28
30				2.2	2.2	2.1	2.3	2.2	2.2	2.7	2.4	2.2	2.6	2.4	2.2	2.2	2.2	2.1	1.8	1.9	1.9		30
32				2.1	2.1	2.1	2.2	2.1	2.1	2.6	2.4	2.2	2.5	2.3	2.1	2.1	2.1	2	1.8	1.9	1.9		32
34				1.9	2	2	2	2	2	2.4	2.3	2.2	2.4	2.3	2.1	2	2	2	1.7	1.8	1.8		34
36				1.8	1.8	1.9	1.9	1.9	1.9	2.3	2.2	2.1	2.3	2.25	2.1	2	1.9	1.9	1.7	1.8	1.8		36
38				1.7	1.7	1.8	1.8	1.8	1.8	2.2	2.2	2.1	2.2	2.2	2.1	1.9	1.9	1.9	1.7	1.7	1.7		38
40				1.6	1.6	1.7	1.7	1.7	1.8	2.1	2.1	2.1	2.1	2.1	2.1	1.8	1.8	1.8	1.6	1.6	1.7		40
42				1.5	1.5	1.6	1.6	1.6	1.7	2	2	2	2	2	2	1.7	1.7	1.7	1.6	1.6	1.6		42
44				1.4	1.4	1.5	1.5	1.5	1.6	1.8	1.9	1.9	1.9	1.9	1.9	1.6	1.6	1.7	1.5	1.5	1.5		44
46				1.3	1.3	1.4	1.4	1.5	1.5	1.7	1.8	1.8	1.6	1.8	1.9	1.6	1.6	1.6	1.4	1.4	1.5		46
48				1.2	1.3	1.3	1.4	1.4	1.4	1.7	1.7	1.7	1.5	1.7	1.8	1.4	1.5	1.5	1.3	1.4	1.4		48
50				1.2	1.2		1.3	1.3	1.3	1.4	1.6	1.6	1.4	1.4	1.6	1.2	1.4	1.5	1.1	1.3	1.3		50
52				1.1	1.1		1.2	1.2	1.3	1.2	1.4	1.5	1.3	1.3	1.4	1	1.3	1.4	0.9	1.2	1.3		52
54				1			1.2	1.2		1.1	1.2	1.3	1.1	1.3	1.3	0.8	1.1	1.2		1	1.2		54
56							1.1	1.1		1	1.1	1.1	0.9	1.1	1.2		0.9	1		0.8	0.9		56
58							1			1	1		0.8	0.9	1			0.8					58
60										0.8	0.9			0.7	0.8								60
62										0.7													62



KONINKLIJKE
SAAN

0900 - 660 60 60
www.saan.nl
info@saan.nl

Versiedatum: 24-12-2021

Servicecode:

K100AK

This publication remains the property of the publisher and shall be treated as confidential, unless contractually specified otherwise. No parts of it may be reproduced, stored in a retrieval system or transmitted in any form or by any means, without the prior written permissions of the publisher. Typing errors reserved. No rights may be derived from these drawings and tables.

Pagina:

7 / 8

Copyright Koninklijke Saan B.V. 2009

Merk:	Liebherr
Type:	LTM 1095-5.1

